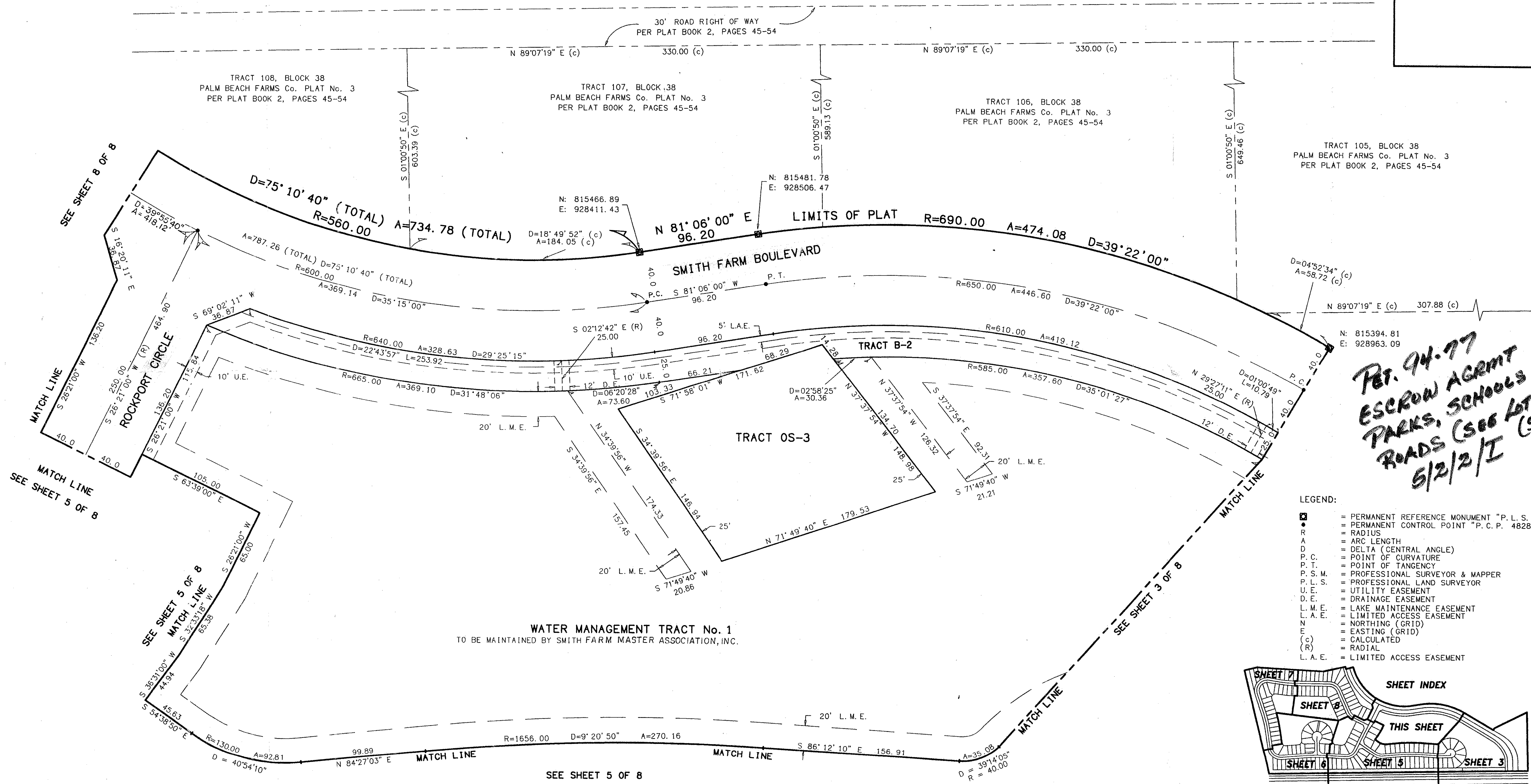
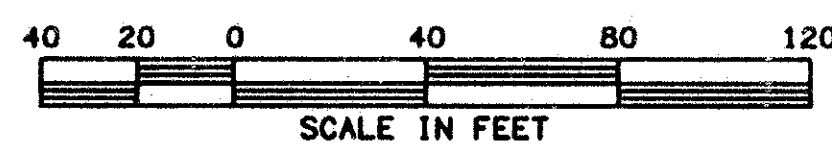


0653-001

143

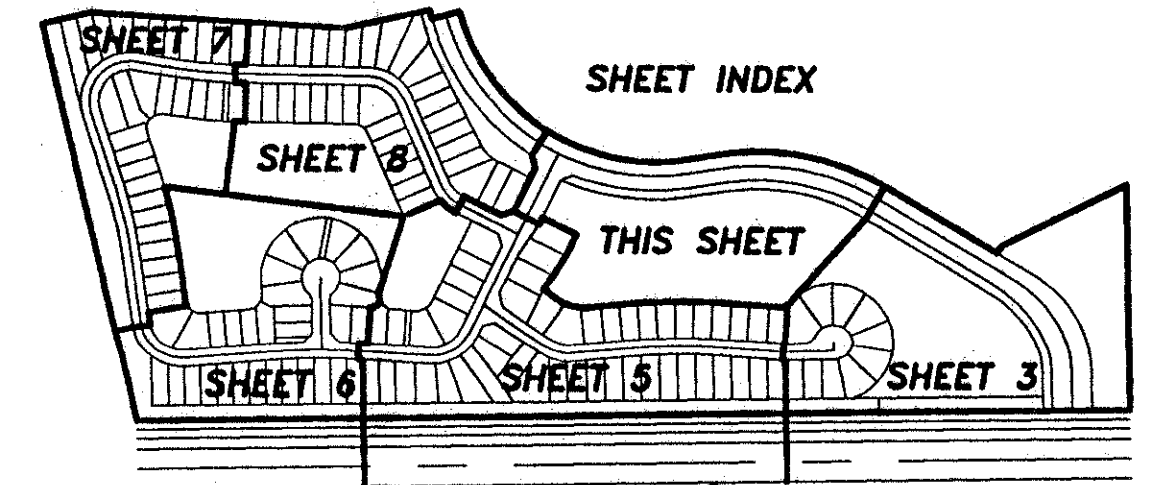
SMITH DAIRY WEST P.U.D.-PLAT No. 1
 BEING A REPLAT OF PART OF BLOCK 38 OF PALM BEACH FARMS
 COMPANY PLAT No. 3, AS RECORDED IN PLAT BOOK 2, PAGES
 45 THROUGH 54 OF THE PUBLIC RECORDS OF PALM BEACH COUNTY, FLORIDA
 IN PART OF SECTIONS 4 AND 5, TOWNSHIP 45 SOUTH, RANGE 42 EAST,
 PALM BEACH COUNTY, FLORIDA

SHEET 4 OF 8 SHEETS
JUNE 1995



*PET. 94-77
 ESCROW AGMT
 PARKS, SCHOOLS
 ROADS (SEE LOT LIST)
 5/2/2/I (50 LOTS)*

- LEGEND:
- ⊠ = PERMANENT REFERENCE MONUMENT "P. L. S. 4828"
 - = PERMANENT CONTROL POINT "P. C. P. 4828"
 - R = RADIUS
 - A = ARC LENGTH
 - D = DELTA (CENTRAL ANGLE)
 - P.C. = POINT OF CURVATURE
 - P.T. = POINT OF TANGENCY
 - P.S.M. = PROFESSIONAL SURVEYOR & MAPPER
 - P.L.S. = PROFESSIONAL LAND SURVEYOR
 - U.E. = UTILITY EASEMENT
 - D.E. = DRAINAGE EASEMENT
 - L.M.E. = LAKE MAINTENANCE EASEMENT
 - L.A.E. = LIMITED ACCESS EASEMENT
 - N = NORTHING (GRID)
 - E = EASTING (GRID)
 - (c) = CALCULATED
 - (R) = RADIAL
 - L.A.E. = LIMITED ACCESS EASEMENT



SMITH DAIRY WEST
 BOOK 76 PAGE 143
 FLOOD ZONE B
 QUAD # 49
 SE 94-77
 PUD NAME DAIRY WEST

TAZ-438

0653-001

76/143

SCALE: 1" = 40'	NICK MILLER, INC. Surveying Planning & Development	DRAWN BY:
DATE: JUNE 1995		CHK:
SMITH DAIRY WEST P.U.D.-PLAT No.1		
2560 RCA Blvd. • Suite 103 Palm Beach Gardens, Florida 33410 (407) 627-5200	DRAWING NUMBER	94014B